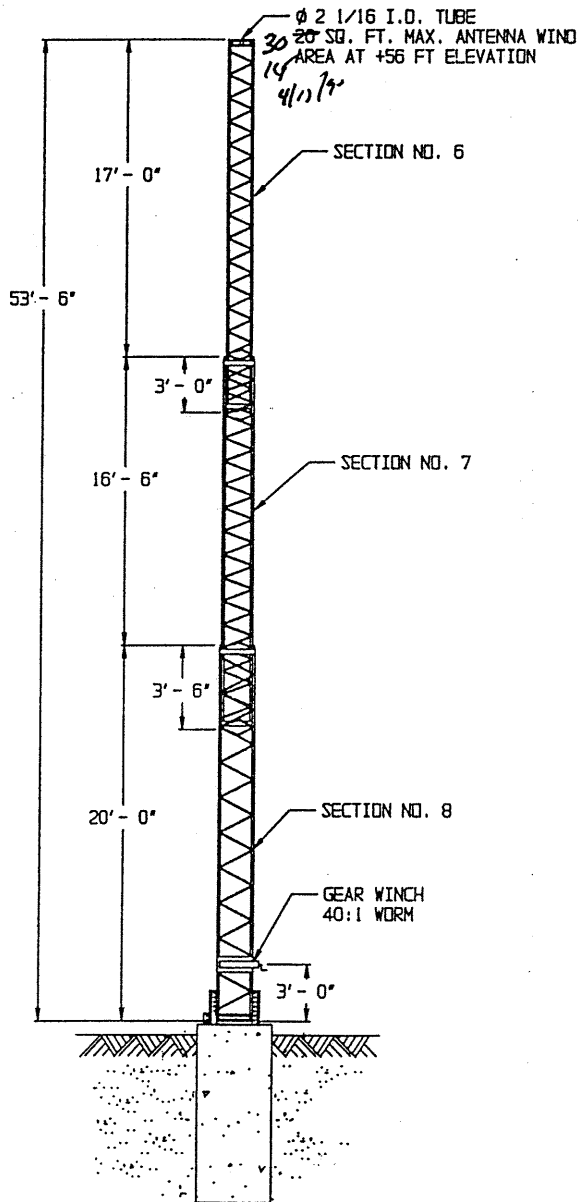
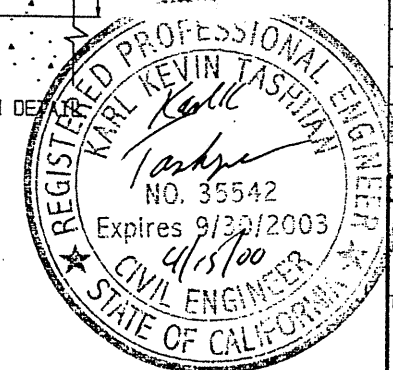
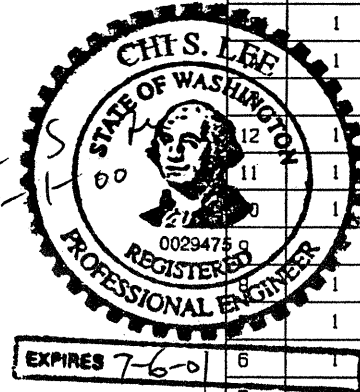
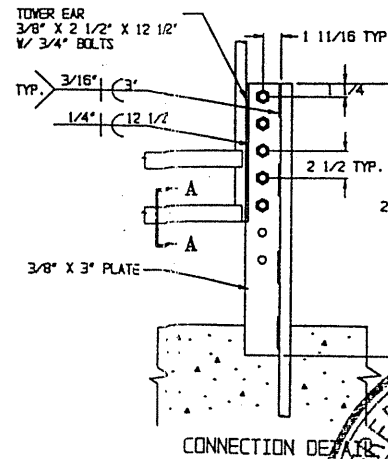
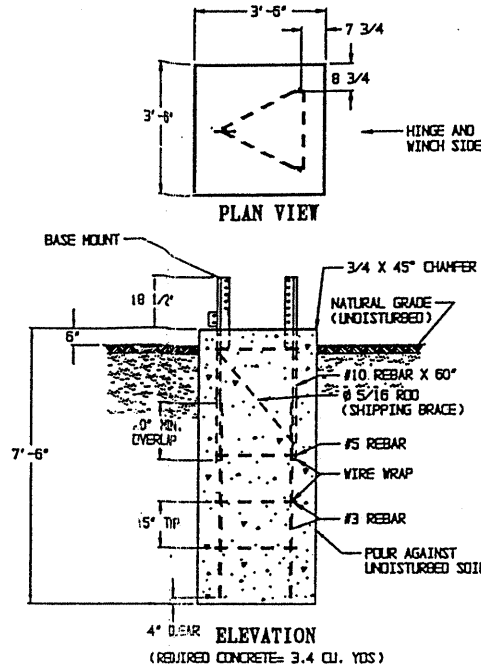


NOTES: UNLESS OTHERWISE SPECIFIED

1. THE TOWER SHALL BE FABRICATED AND ASSEMBLED IN CONFORMANCE WITH THE UNIFORM BUILDING CODE.
2. THE TOWER SHALL BE COMPLETELY HOT DIPPED GALVANIZED AFTER FABRICATION.
3. FLEXIBLE GALVANIZED AIRCRAFT CABLES OF 7 X 19 TYPE SHALL CONFORM TO A DESIGN LOAD EQUAL TO 1400 POUNDS FOR 3/16 INCH SIZE. THE MANUFACTURER'S CERTIFICATE OF GUARANTEE FOR MINIMUM BREAKING STRENGTH SHALL SHOW A BREAKING STRENGTH OF THREE TIMES THE DESIGN LOAD OF 1400 POUNDS FOR EACH FOLL OF CABLE AND SHALL BE SUBMITTED FOR EACH JOB TO THE BUILDING DEPARTMENT UPON REQUEST.
4. THE CONCRETE SHALL CONSIST OF CEMENT(5 1/2 SACKS OF CEMENT PER CUBIC YARD OF CONCRETE), AGGREGATE(3/4" SIZE), SAND, AND WATER(WATER TO CEMENT RATIO SHALL NOT EXCEED 0.50, AND CONCRETE SLUMP SHALL NOT EXCEED 4 1/2 INCHES) TO YIELD A MINIMUM COMPRESSIVE STRENGTH OF 2500 PSI AT 28 DAYS.
5. ALL FOOTINGS SHALL PENETRATE INTO AND BEAR UPON UNDISTURBED SOIL OR COMPACTED SOIL - EACH SOIL WITH A MINIMUM IN-PLACE-DENSITY, AS DETERMINED BY ASTM D1556-70, OF 92% OF MAXIMUM DENSITY AT OPTIMUM MOISTURE CONTENT ESTABLISHED IN ACCORDANCE WITH ASTM D1557-70, FOR THE SOIL OF THE TOWER SITE. ALL BACKFILL SOIL SHALL CONFORM WITH THE IN-PLACE-DENSITY AND OPTIMUM MOISTURE CONTENT REQUIREMENTS OF THIS PARAGRAPH.
6. THE FOUNDATION DESIGN IS ADEQUATE FOR SOILS WITH ALLOWABLE LATERAL BEARING VALUES GREATER THAN OR EQUAL TO 100 PSF/FT OF DEPTH AS LISTED IN TABLE NO. 29-B, UNIFORM BUILDING CODE, 1991 EDITION.
7. ALL REINFORCING STEEL SHALL CONFORM TO ASTM A-615-76A AND AWS D1.1-90 STRUCTURAL WELDING CODE-REINFORCING STEEL.
8. TOWER IS DESIGNED TO BE USED IN A FULLY EXTENDED POSITION.

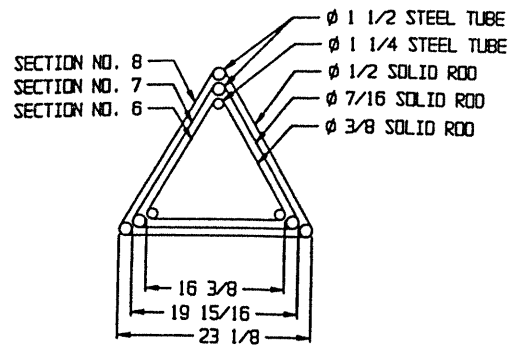


**TOWER DESIGN LOADING**  
WIND LOAD 70 MPH *Erc* 1997 UBC NO ICE LOADING

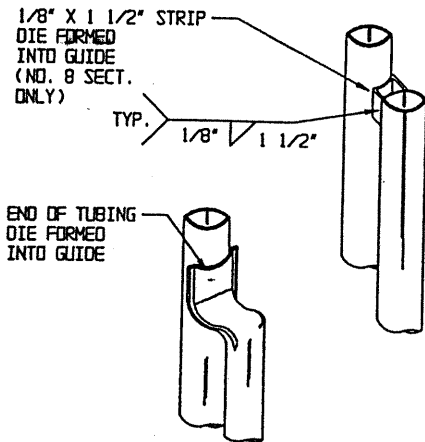


		REVISIONS		DATE	APPROVED
ZONE	LTR	ECD	DESCRIPTION		
41	3		BOLT, .500 X 2.0, SS		
40	4		NUT, LOCK, .500, SS		
39	10		WASHER, LOCK, .375, SS		
38	2		BOLT, .438 X 1.250, SS		
37	2		WASHER, FLAT .438, SS		
36	1		VENT AIR FOR 40:1 GEARBOX W/INST		
35	4		SCREW DRIVE .125X.250, ZP		
34	1		BOLT, FH, .500 X 1.750, SLOTTED, SS		
33	10		NUT, .375 HDG		
32	6		NUT WIRE 14-22 GA ORANGE		
31	4		WASHER, LOCK, .250 SS		
30	1		PULLEY, 5A-K8		
29	4		PULLEY, 5A-K6		
28	3		PULLEY, 4A-K8		
27	3		PULLEY, 4A-K6		
26	4		WASHER, FLAT .500 SS		
25	1		PULLEY, SINGLE, 10.75, AK109H		
24	10		CLAMP .375 CUSHION MCMASTER 3254T3		
23	10		CLAMP .500 CUSHION MCMASTER 3254T4		
22	1		TURNBUCKLE, .375 X 6, HDG		
21	2		ANCHOR, BRACKET, ADJUSTABLE		
20	1		PULL-DOWN ROD, .500 X 17"		
19	1		SPRING, 12", CENTURY		
18	1		PLATE, BEARING		
17	1		PLATE, GEARBOX		
16	1		WINCH DRUM WELDMENT		
	1		EMERGENCY HANDLE ASSY		
	1		LIMIT SWITCH BRACKET FOR 1.500 TUBE		
	1		BRACKET L/S LOWER .250X2X12		
	1		LIMIT SWITCH BRACKET		
	1		CDR PLATE, LM-5		
	1		GEARBOX 40:1 W300 STYLE A		
	1		CABLE P-O .188 X 7 X 19 X 86'		
	1		CABLE P-U .188 X 7 X 19 X 80'		
	1				
	6				
	5		CABLE 6PD .188 X 7 X 19 X 17'-11"		
	4		CABLE 6PW .188 X 7 X 19 X 18'-3.5"		
	3		ELECT ASSY		
	2		SERIAL PLATE FOR CRANK-UP TOWERS		
	1		MOTOR .500 HP LEESON 112431		

PARTS LIST		PART NO.		TITLE	
ITEM	QTY REQD	PART NO. IDENTIFYING NO.	NOMENCLATURE OR DESCRIPTION	DWG NO.	
UNLESS OTHERWISE SPECIFIED DIMENSIONS ARE IN INCHES TOLERANCES ARE:					
DECIMALS	ANGLES				
.0004	1/2				
STRAIGHT EDGE .008					
MATERIAL	APPROVALS	DATE	TITLE		
FINISH	DRAWN		SKY-354HD CRANK UP TOWER		
	CHECKED		SIZE	CAGE CODE	DRAWING NO.
	ENG. APPD.		D		
NEXT ASSY	USED ON	SCALE 1/1			
APPLICATION	DO NOT SCALE DRAWING	SHEET 1 OF 2			

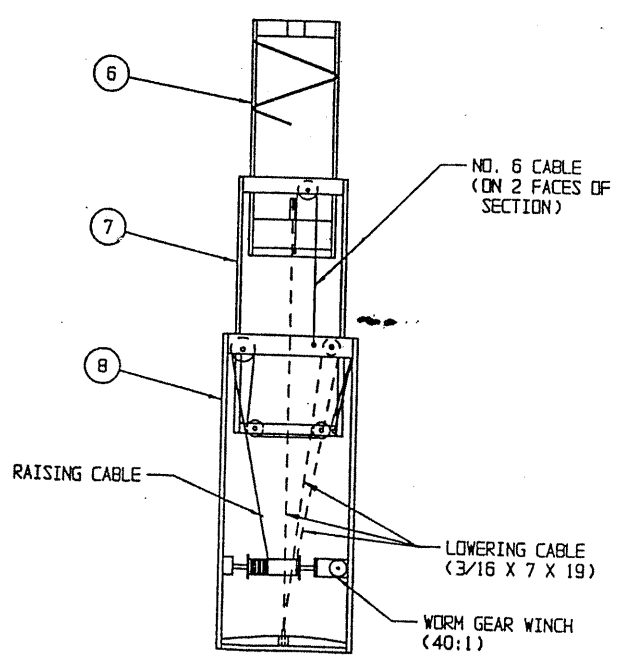
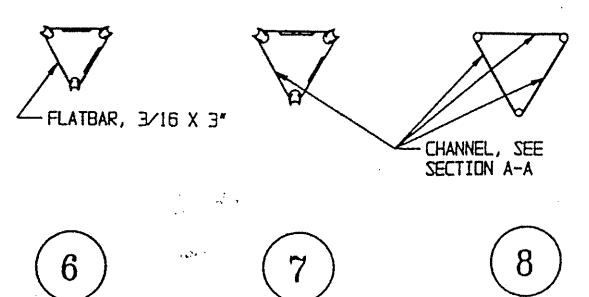
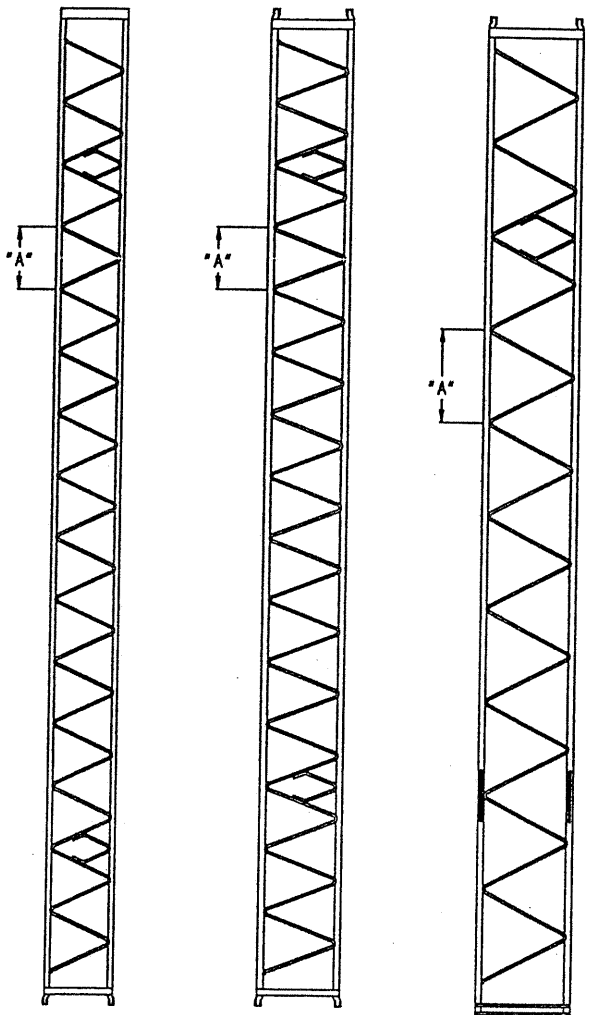
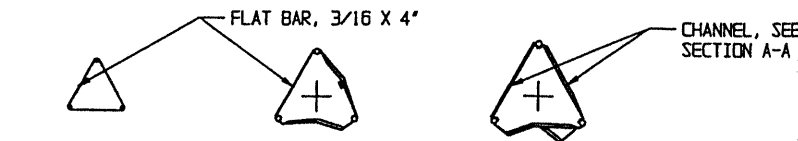


TOWER CROSS SECTION

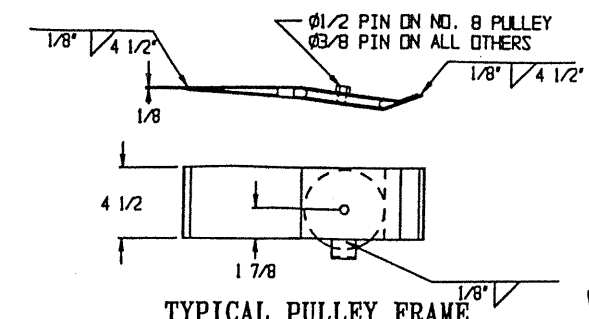


TYPICAL SECTION GUIDES

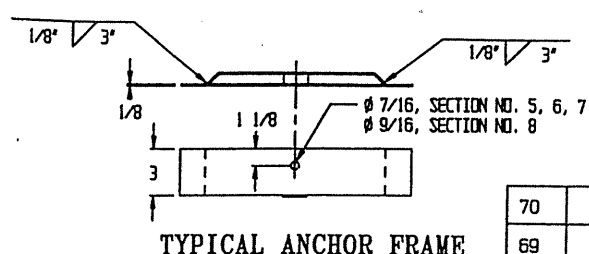
SECTION	SECTION LEG SIZE	SECTION BRACE SIZE	1/2 LOOPS (TOTAL)	DIM "A"	WELD SCHEDULE		
					SIZE	LENGTH	TYPE
6	1 1/4 X .095 WALL, STL TUBE	Ø3/8 STL ROD	6 (TOP & BOTTOM)	15"	.125"	.91"	V-TYPE
7	1 1/2 X .120 WALL, STL TUBE	Ø7/16 STL ROD					
8	1 1/2 X .219 WALL, STL TUBE	Ø1/2 STL ROD	3 (TOP ONLY)	22 1/2"	.156"	1.29"	



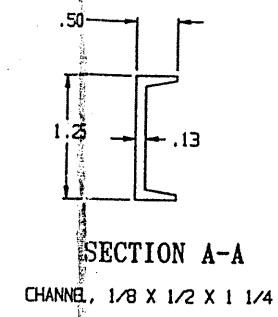
RAISING SYSTEM



TYPICAL PULLEY FRAME

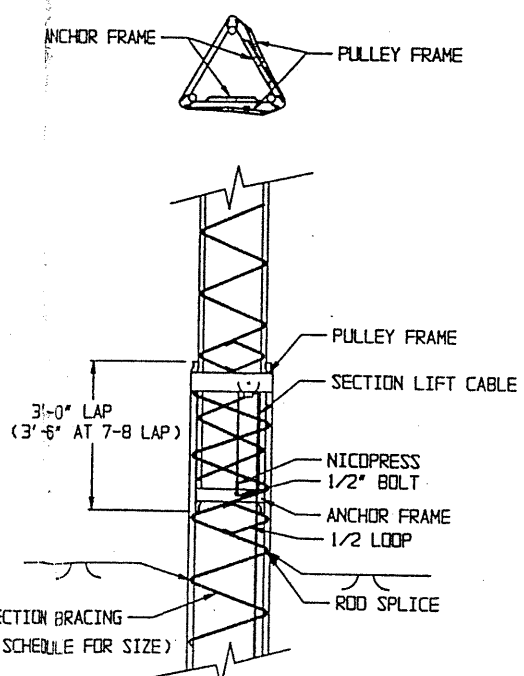


TYPICAL ANCHOR FRAME

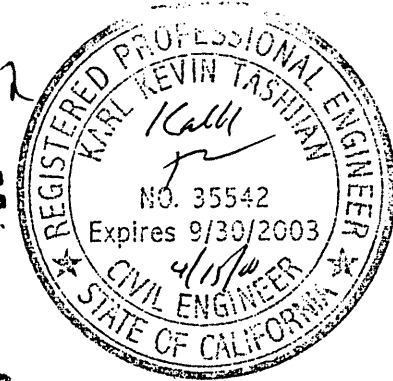
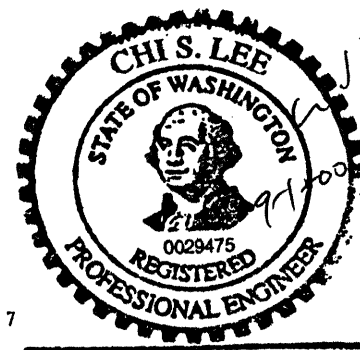


SECTION A-A

CHANNEL, 1/8 X 1/2 X 1 1/4



TYPICAL LAP DETAIL



EXPIRES 7-6-01

ITEM	QTY	PART NO. IDENTIFYING NO.	NOMENCLATURE OR DESCRIPTION	DWG NO.
70	1		BAR ASSEMBLY, LIMIT SWITCH	
69	1		BELT GUARD	
68	1		SKY-470 TOWER	
67	1		V-BELT DAYCO 4L410 GATES 2410	
66	1		PULLEY SINGLE 1A18F .625X1.750	
65	1		HUB .625ID FOR V PULLEY (H)	
64	1		PLUG, PIPE, .125 NPT, BLACK	
63	4		WASHER, LOCK, #10, SS	
62	1		BOLT, .312 X 1.250, HDG	
61	11		NUT, LOCK, .250, SS	
60	1		BEARING FLANGE 2H FAFNIR VCJT-1	
59	1		LOCKNUT WATER PROOF 141SL T&B	
58	1		STRAIN RELIEF CONN T&B 2521	
57	4		SCREW, 10-24 X .500, SS	
56	3		BOLT, .312 X 1.0, HDG	
55	2		WASHER, FLAT, .312, SS	
54	2		WASHER, LOCK, .312, SS	
53	2		BOLT, .312 X .750, SS	
52	11		BOLT, .250 X .750, SS	
51	4		WASHER, LOCK, .312, HDG	
50	11		WASHER, FLAT, .250, SS	
49	4		NUT, .312, HDG	
48	1		BOLT, .375 X 2.500, HDG	
47	6		BOLT, .375 X 1.750, SS	
46	2		BOLT, .375 X 1.500, HDG	
45	8		BOLT, .375 X 1.25, HDG	
44	24		WASHER, FLAT, .375, SS	
43	2		NUT, LOCK, .438, SS	
42	5		BOLT, FH, .375 X 1.750, SS	

PARTS LIST			
UNLESS OTHERWISE SPECIFIED DIMENSIONS ARE IN INCHES TOLERANCES ARE:	DECIMALS .004, .005, .006	ANGLES ± 1/2	STRAIGHT EDGE .008
APPROVALS	DATE	TITLE	
DRAWN <b>LINEMASTER</b>		SKY-354HD CRANK UP TOWER	
CHECKED		SIZE	CAGE CODE
ENG. APPD.		DRAWING NO.	REV.
FINISH		SCALE 1/1	
DO NOT SCALE DRAWING		SHEET 2 OF 2	

NEXT ASSY	USED ON
APPLICATION	