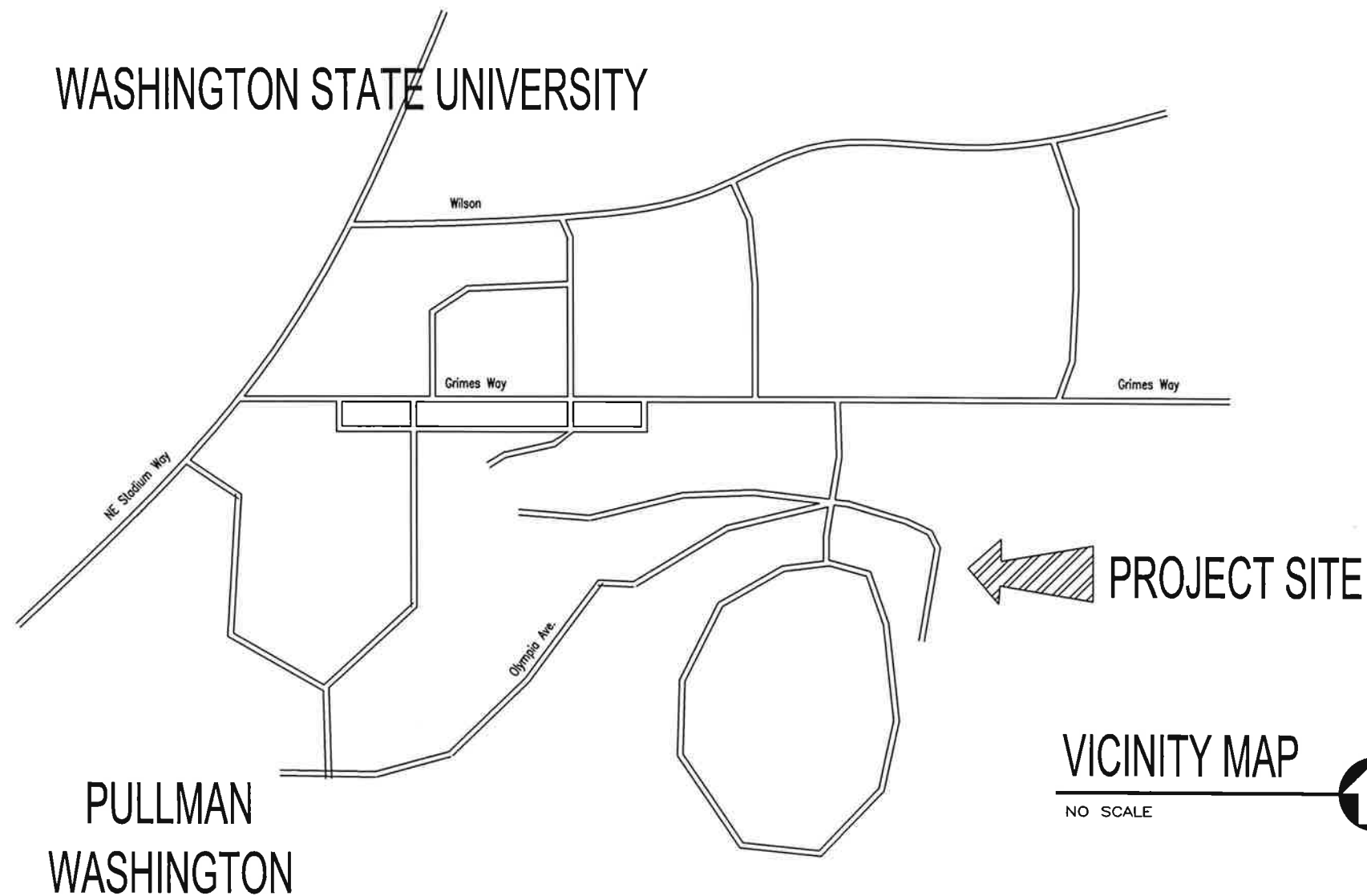


W7YH

Washington State University Pullman, WA

RHO EPSILON AMATEUR RADIO CLUB
TOWER INSTALLATION

WASHINGTON STATE UNIVERSITY



PULLMAN
WASHINGTON

VICINITY MAP

NO SCALE



DRAWING LIST

11050-M-001D	Rev 0	VICINITY MAP AND DRAWING INDEX
11050-M-002D	Rev 0	GENERAL NOTES
11050-G-001D	Rev 0	GENERAL ARRANGEMENT PLAN
11050-F-001D	Rev 0	FND'N PLANS, SECTIONS AND DETAILS SHEET 1
11050-F-002D	Rev 0	FND'N PLANS, SECTIONS AND DETAILS SHEET 2

W7YH AMATEUR TOWER
PULLMAN, WASHINGTON
VICINITY MAP AND
DRAWING INDEX

DSH	H. Lonberg	06/06/11
DRN	H. Lonberg	06/06/11
CHK	H. Lonberg	06/06/11
APP	H. Lonberg	06/06/11
SCALE	NONE	PROJ No. 11050

LDG
Lonberg Design Group

DWG No. 11050-M-001D

SS
0

GENERAL NOTES:

GENERAL:

- G1. GOVERNING CODE: 2009 INTERNATIONAL BUILDING CODE (IBC). TIA-222-G AS REFERENCED BY THE IBC.
- G2. SITE DESCRIPTION: EXISTING OPEN PROPERTY AT WASHINGTON STATE UNIVERSITY, EAST OF USDA BUILDING.

DESIGN LOADS:

- D1. WIND LOAD
85 MPH BASIC WIND SPEED, EXPOSURE "C"
- D2. SEISMIC LOAD (46.73' N, 117.15' W)
ASCE 07-05, I=1.0, SITE CLASS "D"
Ss= 0.286; S1= 0.089
- D3. SOIL BEARING
IBC TABLE 1804.2, CLASS 5 SOIL
- D4. ANTENNA AREA:
ANTENNA 1 - 6.8 SF
ANTENNA 2 - 10.7 SF

STRUCTURAL AND MISCELLANEOUS STEEL

- S1. ALL STRUCTURAL AND MISCELLANEOUS STEEL SHALL CONFORM TO ASTM A36 FOR BARS, SHAPES AND PLATES, ASTM A500 GRADE B FOR TUBING, AND ASTM A53 GRADE B TYPE E OR S FOR PIPE.
- S2. STRUCTURAL AND MISCELLANEOUS STEEL FABRICATIONS SHALL BE DETAILED, FABRICATED, AND ERECTED PER AISC SPECIFICATIONS AND THE MANUAL OF STEEL CONSTRUCTION 13TH EDITION.
- S3. WELDING SHALL CONFORM TO AWS D1.1 UTILIZING ELECTRODES CONFORMING TO AWS SPECIFICATION A.1 OR A5.5 CLASS E70XX SERIES, UNLESS OTHERWISE SPECIFIED. ONLY LOW HYDROGEN ELECTRODES SHALL BE USED.

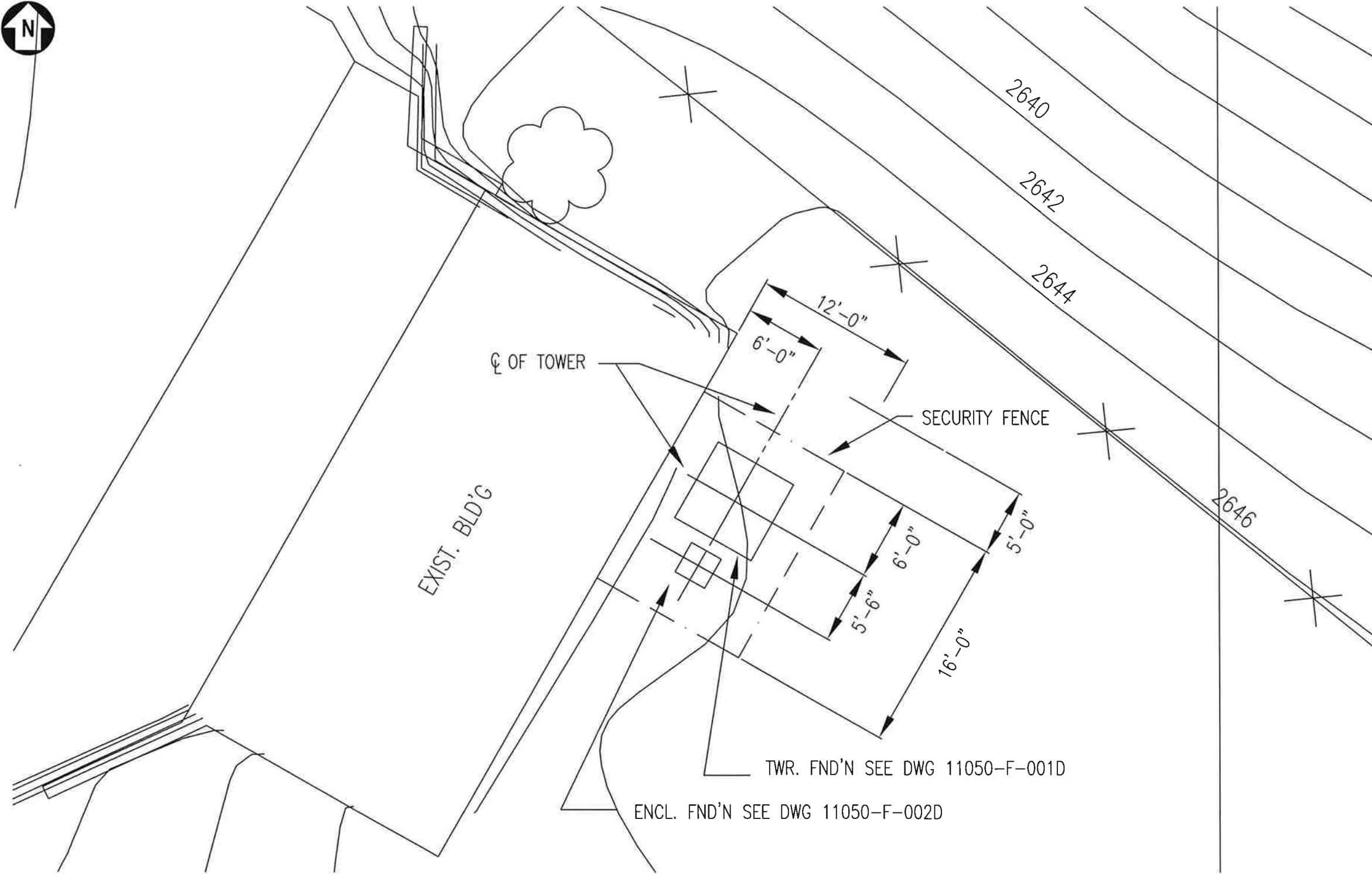
CONCRETE

- C1. ALL CONCRETE SHALL COMPLY WITH THE REQUIREMENTS OF ACI 318-08 AND SHALL DEVELOP 2,500 PSI MINIMUM COMPRESSIVE STRENGTH AT 28 DAYS UNLESS NOTED OTHERWISE. MAXIMUM WATER CONTENT 0.42.
- C2. REINFORCING STEEL BARS SHALL CONFORM TO ASTM A615, DEFORMED BARS GRADE 60. REINFORCING STEEL BARS TO BE WELDED SHALL CONFORM TO ASTM A706, GRADE 60.
- C3. ALL REINFORCING LAP SPLICES SHALL BE A MINIMUM OF 40 BAR DIAMETERS, BUT NOT LESS THAN 12 INCHES, UNLESS OTHERWISE NOTED. HOOKS SHALL BE ACI STANDARD.
- C4. BOND NEW CONCRETE TO EXISTING CONCRETE WITH "SIKADUR 32 HI-MOD" EPOXY BONDING AGENT AS MANUFACTURED BY "SIKA CORPORATION" OR "WELD-CRETE" BY "LARSON PRODUCTS CO." OR APPROVED EQUIVALENT, INSTALLED STRICTLY IN ACCORDANCE WITH THE MANUFACTURER'S INSTRUCTIONS.
- C5. 3" MINIMUM COVER FOR REINFORCING SHALL BE PROVIDED FOR CONCRETE CAST AGAINST EARTH AND 2" MINIMUM COVER SHALL BE PROVIDED FOR REINFORCING IN ALL OTHER CONCRETE UNLESS NOTED.

ELECTRICAL (GROUNDING)

- E1. GROUNDING SHALL CONFORM TO MANUFACTURER'S RECOMMENDATION AND THE PREVAILING ELECTRICAL CODE WHICHEVER IS MORE RESTRICTIVE.

WYTH AMATEUR TOWER PULLMAN, WASHINGTON GENERAL NOTES				LDG Lonberg Design Group
DSN	H Lonberg	06/06/11		
DRN	H Lonberg	06/06/11		
CHK	H Lonberg	06/06/11		
APP	H Lonberg	06/06/11		
SCALE	NONE	PROJ No. 11050	DWG No. 11050-M-002D	
			RS 0	



TWR. FND'N SEE DWG 11050-F-001D

ENCL. FND'N SEE DWG 11050-F-002D

GENERAL ARRANGEMENT PLAN

1/4"=1'-0"

NOTES:

- 1.) FOR FOUNDATION PLANS AND DETAILS SEE 11050-F-001D.
- 2.) FOR STRUCTURAL GENERAL NOTES SEE 11050-M-002D.
- 3.) FOR GROUNDING SEE 11050-F-002D.

W7YH AMATEUR TOWER
PULLMAN, WASHINGTON
GENERAL ARRANGEMENT
PLAN

DSN	H. Lonberg	06/06/11
DPN	H. Lonberg	06/06/11
CHK	H. Lonberg	06/06/11
APP	H. Lonberg	06/06/11

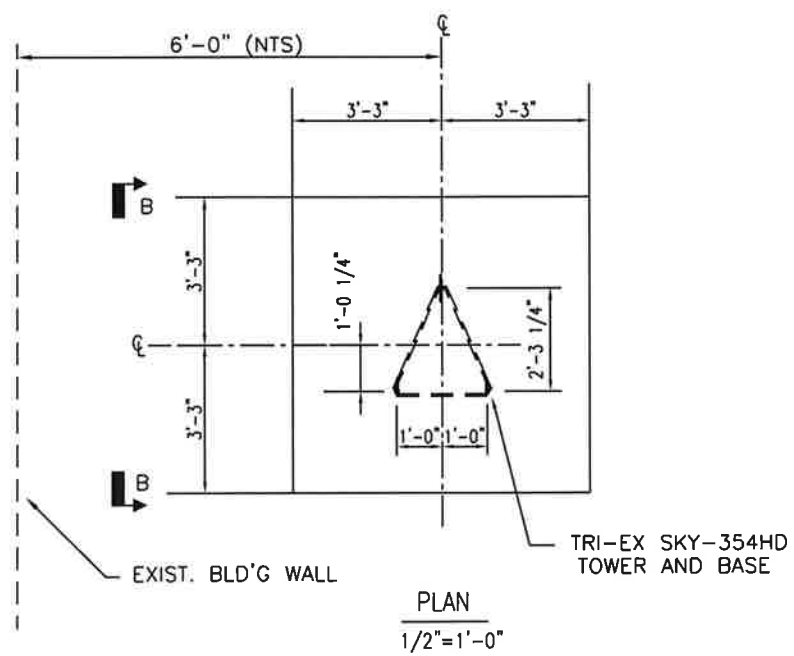
SCALE 1/4"=1'-0"

PROJ No. 11050

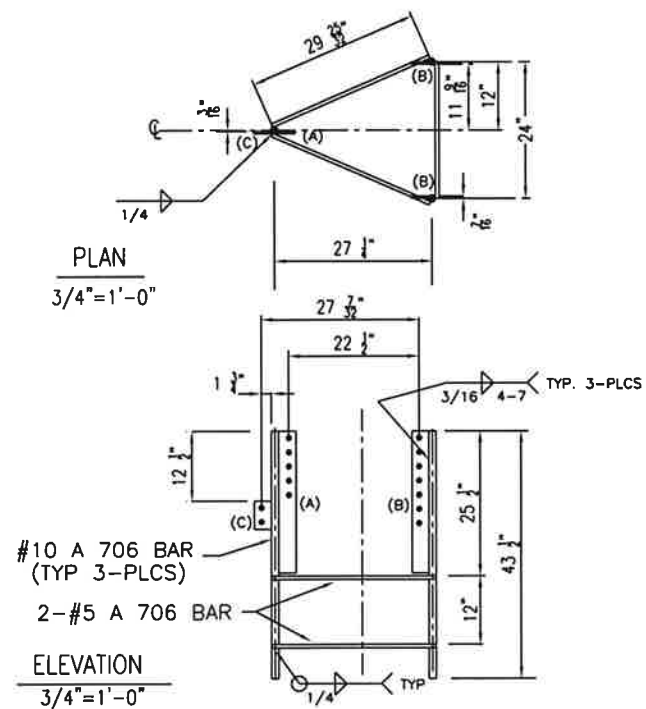
LDG
Lonberg Design Group

DWG No. 11050-G-001D

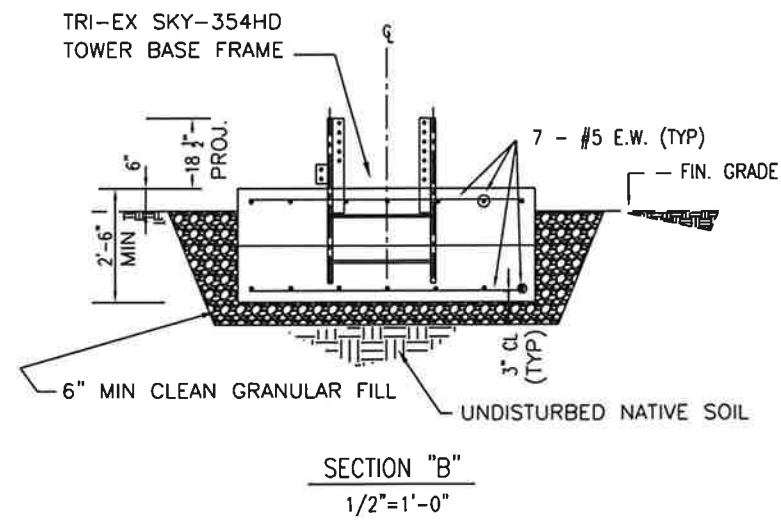
ISS. 0



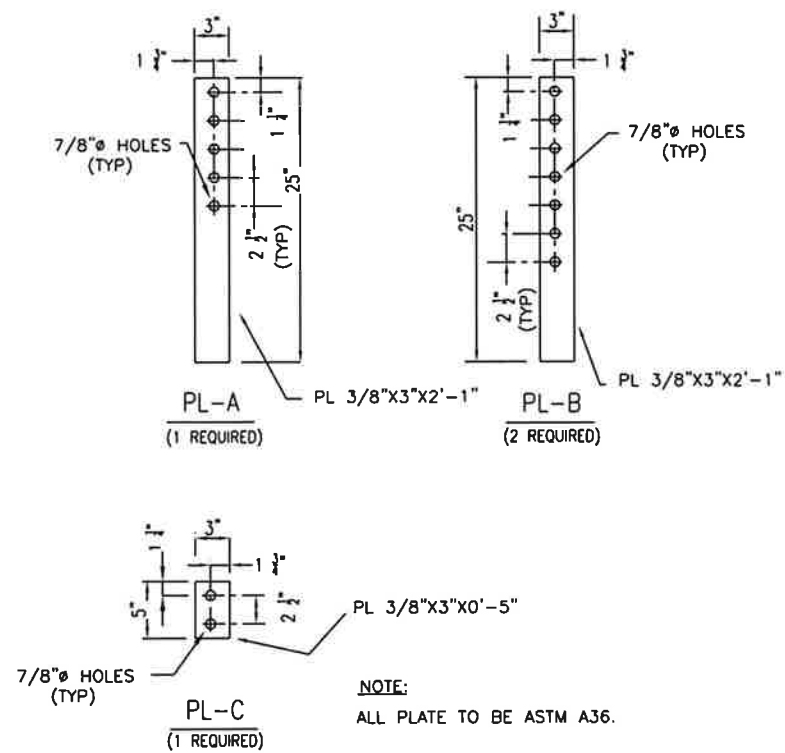
TOWER FOUNDATION



TOWER EMBEDDED BASE



SECTION "B"
1/2"=1'-0"

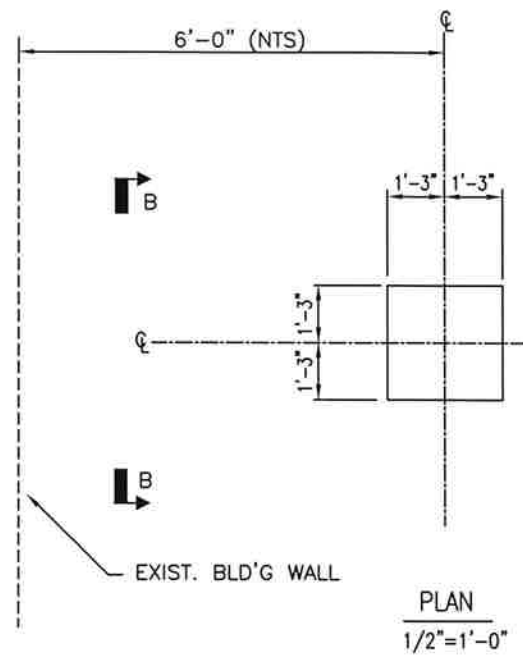


EMBEDDED BASE PLATE DETAILS

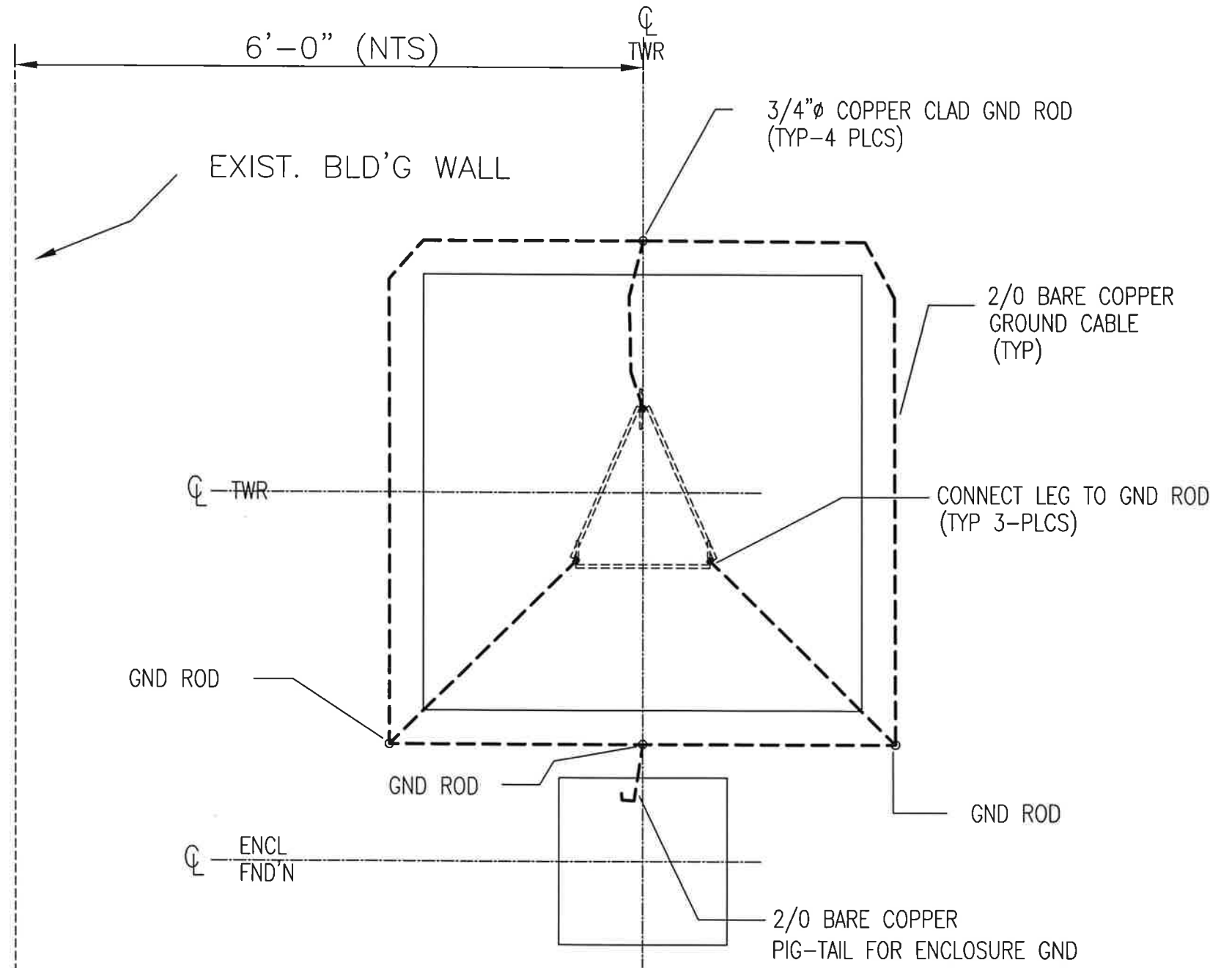
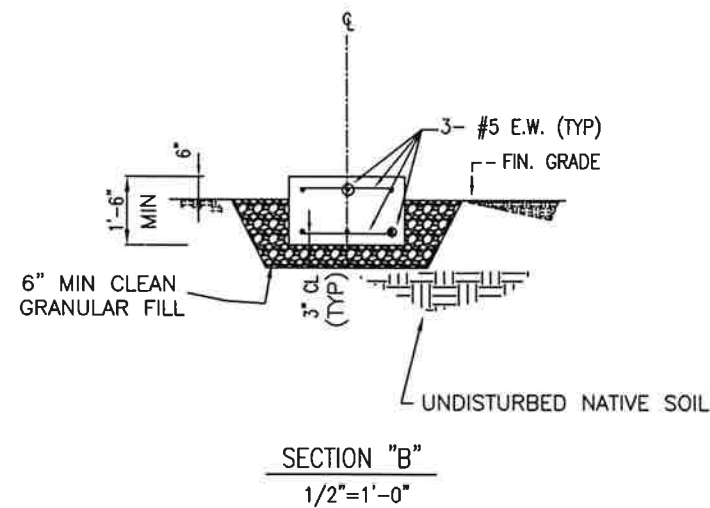
NOTE:
ALL PLATE TO BE ASTM A36.

NOTES:
1.) FOR STRUCTURAL GENERAL NOTES SEE 11050-M-0020.

WYTH AMATEUR TOWER PULLMAN, WASHINGTON FND'N PLANS, SECTIONS AND DETAILS SHEET 1		LDG Lorberg Design Group
DSN H Lorberg	06/06/11	
DRN H Lorberg	06/06/11	DWG No. 11050-F-001D
CHK H Lorberg	06/06/11	
APP H Lorberg	06/06/11	ISS. 0
SCALE SEE PLAN	PROJ No 11050	



ENCLOSURE FOUNDATION



NOTE: ALL GROUND CONNECTIONS TO BE MADE WITH EXOTHERMIC WELDED JOINTS (TYP).

TOWER GROUNDING

NOTES:

- 1.) FOR STRUCTURAL GENERAL NOTES SEE 11050-M-002D.

W7YH AMATEUR TOWER PULLMAN, WASHINGTON FND'N PLANS, SECTIONS AND DETAILS SHEET 2		LDG Lonberg Design Group
DSN	H Lonberg 06/06/11	
DRN	H Lonberg 06/06/11	DWG No. 11050-F-002D
CHK	H Lonberg 06/06/11	
APP	H Lonberg 06/06/11	ISS 0
SCALE SEE PLAN	PROJ No. 11050	